



India Meteorological Department  
(Ministry of Earth Sciences)

NATIONAL BULLETIN NO. 11 (Land/03/2025)

TIME OF ISSUE: 0845 HOURS IST

DATED: 19.07.2025

FROM: INDIA METEOROLOGICAL DEPARTMENT (FAX NO. 24643965/24699216/24623220)

TO: CONTROL ROOM, NDM, MINISTRY OF HOME AFFAIRS ([FAX.NO.](#) 23093750)

CONTROL ROOM NDMA ([FAX.NO.](#) 26701729)

CABINET SECRETARIAT (FAX.NO.23012284, 23018638)

PS TO HON'BLE MINISTER FOR S & T AND EARTH SCIENCES (FAX NO.23316745)

SECRETARY, MOES (FAX NO. 24629777)

H.Q. (INTEGRATED DEFENCE STAFF AND CDS) (FAX NO. 23005137/23005147)

DIRECTOR GENERAL, DOORDARSHAN (23385843)

DIRECTOR GENERAL, AIR (23421105, 23421219)

PIB MOES (FAX NO. 23389042)

UNI (FAX NO. 23355841)

D.G. NATIONAL DISASTER RESPONSE FORCE (NDRF) (FAX NO. 26105912, 2436 3260)

DIRECTOR, PUNCTUALITY, INDIAN RAILWAYS (FAX NO. 23388503)

CHIEF SECRETARY, GOVT. OF UTTAR PRADESH (FAX NO. 0522-2239283)

CHIEF SECRETARY, GOVT. OF MADHYA PRADESH (FAX NO. 0755-2551521)

CHIEF SECRETARY, GOVT. OF RAJASTHAN (FAX NO. 0141-2227114)

CHIEF SECRETARY, GOVT. OF DELHI (FAX NO. 011-23392101)

CHIEF SECRETARY, GOVT. OF CHANDIGARH (FAX NO. 0172-2740608)

CHIEF SECRETARY, GOVT. OF GUJARAT (FAX NO. 079-23250305)

CHIEF SECRETARY, GOVT. OF HARYANA (FAX NO.0172-2740317)

**Subject: Depression over northeast & adjoining areas of northwest Rajasthan**

The Depression over central parts of Northeast Rajasthan moved west-northwestwards with a speed of 23 kmph during past 6 hours and lay centred at 0530 hrs IST of today, the 19<sup>th</sup> July, 2025, over northeast & adjoining areas of northwest Rajasthan, near latitude 27.5°N and longitude 75.1°E, 10 km south of Sikar, 90 km south-southeast of Churu, 100 km northwest of Jaipur and 190km east-southeast of Bikaner.

It is likely to move west-northwestwards across northwest Rajasthan and weaken gradually into a well-marked low-pressure area during next 12 hours.

**Warnings:**

**(i) Rainfall Warning:**

**East Rajasthan:** Light to moderate rainfall at most places with **heavy to very heavy rainfall** at a few places on 19<sup>th</sup> July.

**West Rajasthan:** Light to moderate rainfall at most places with **heavy to very heavy rainfall** at isolated places and extremely heavy rainfall isolated on 19<sup>th</sup> July and heavy rainfall at isolated places on 20<sup>th</sup> July.

**Saurashtra & Kutch:** Light to moderate rainfall at most places with **very heavy rainfall** at isolated places over on 19<sup>th</sup> July.

**Gujarat:** Light to moderate rainfall at most places with **heavy rainfall** at isolated places over north Gujarat on 19<sup>th</sup> July.

**West Madhya Pradesh:** Light to moderate rainfall at most places with **heavy rainfall** at isolated places on 19<sup>th</sup> July.

**(ii) Wind Warnings:** Squally wind speed reaching 35-45 kmph gusting to 55 kmph over northeast & adjoining areas of northwest Rajasthan and 30-40 kmph gusting to 50 kmph over adjoining areas of and South Haryana is likely to prevail during next 12 hours and decrease gradually thereafter.

**(iii) Impact Expected and Action Suggested due to very heavy/extremely heavy rainfall and squally winds (Rajasthan, Madhya Pradesh, Uttar Pradesh, Gujarat and Haryana)**

**Impact expected:**

- ❖ Breaking of tree branches, uprooting of small trees like banana, papaya, drum sticks. Strong wind and rain may damage plantation, horticulture and standing crops.
- ❖ Partial damage to vulnerable structures due to strong winds and rain.
- ❖ Minor damage to kutcha houses/walls, huts and roads due to heavy rain.
- ❖ Loose objects may fly.
- ❖ Onshore and offshore operations may get affected.
- ❖ Small ships, trawlers and boats may be affected.
- ❖ Road and rail traffic may be affected due to heavy rain and squally winds.
- ❖ There could be localised landslides, mudslides, landslips, water logging, inundation and flooding over low lying areas.
- ❖ Occasional reduction in visibility due to heavy rainfall.
- ❖ Helicopter services may get affected.

**Action suggested:**

- ❖ People are advised to keep a watch on the weather for worsening conditions and be ready to move to safer places accordingly.
- ❖ Take safe shelters; do not take shelter under trees, as there could be lightning.
- ❖ In case of expected lightning, unplug electrical/ electronic appliances, immediately, get out of water bodies and keep away from all the objects that conduct electricity.
- ❖ Tourism and recreational activities to be regulated.
- ❖ Onshore and offshore activities to be judiciously regulated.
- ❖ Helicopter services to be regulated.

**Significant rainfalls accumulated 0830-1730 hrs IST of yesterday, the 18<sup>th</sup> July, 2025 are given in Annexure-I**

**Next bulletin will be issued at 1130 hrs IST of today, the 19<sup>th</sup> July, 2025.**

**(Umasankar Das)**

**Scientist-D, IMD, New Delhi**

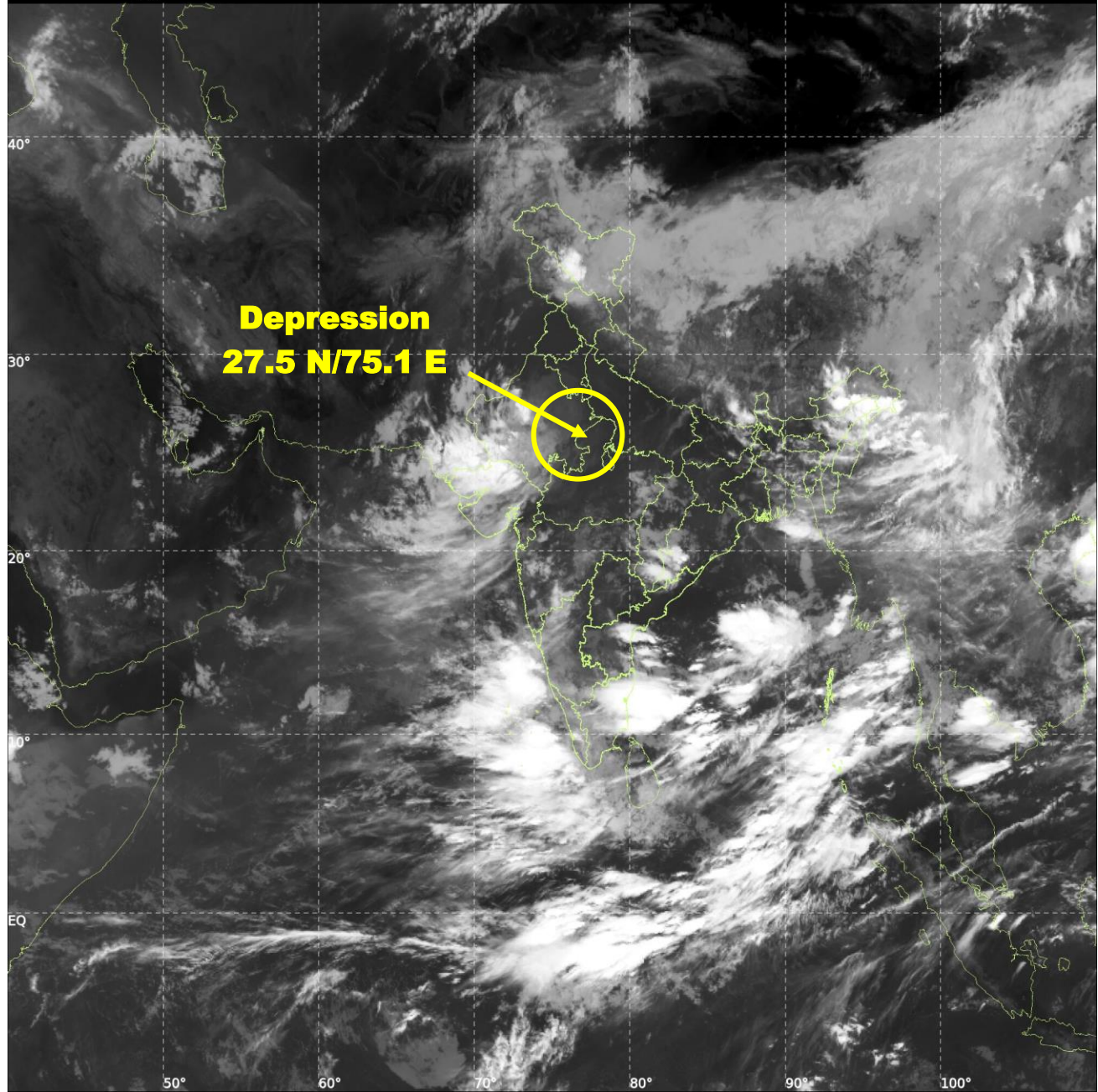
*Copy to: Meteorological Centres- Lucknow, Bhopal, Jaipur, Delhi, Chandigarh , Ahmedabad.*



INSAT-3DS IMG, Thermal Infrared1 Count @ 10.83  $\mu\text{m}$   
GMT:19-07-2025/(0200-0227) IST:19-07-2025/(0730-0757)  
L1C MERCATOR (LINEAR STRETCH: 1%)

431

907







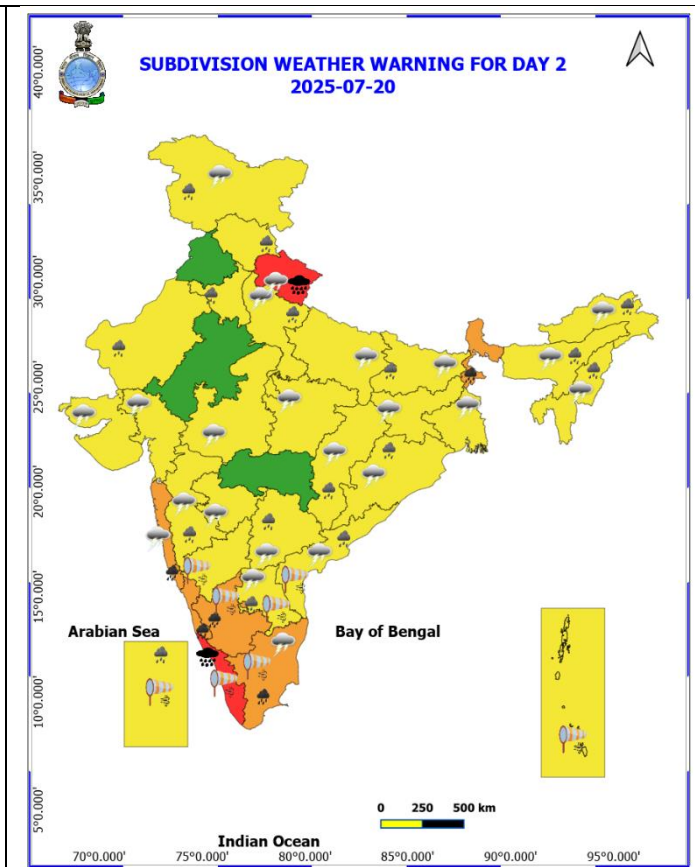
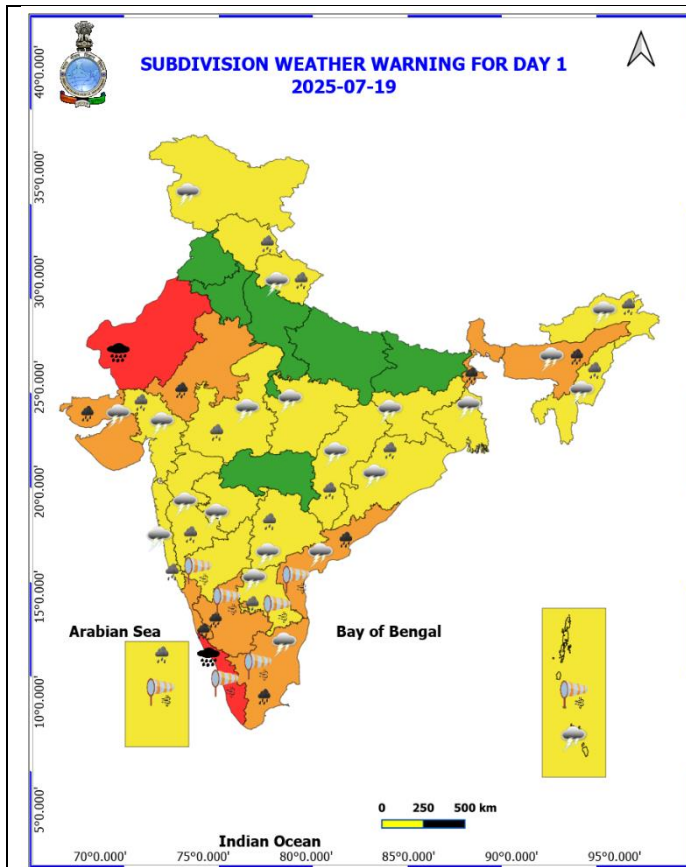
**OBSERVED AND FORECAST TRACK ALONG WITH CONE OF UNCERTAINTY OF  
LAND DEPRESSION OVER NORTHEAST AND ADJOINING AREAS OF  
NORTHWEST RAJASTHAN AT 0530 HRS. IST (0000 UTC) OF 19<sup>th</sup> JULY 2025**

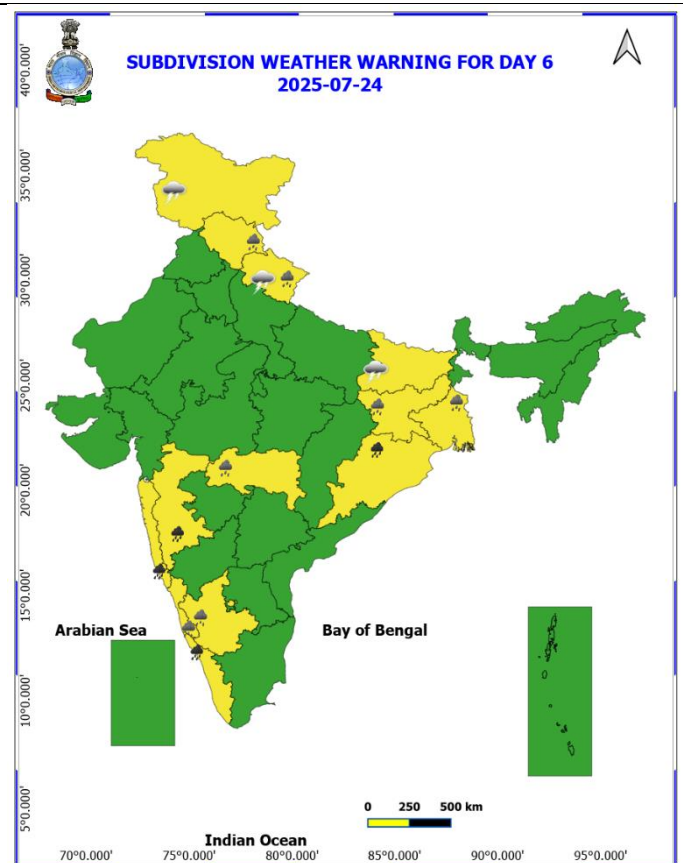
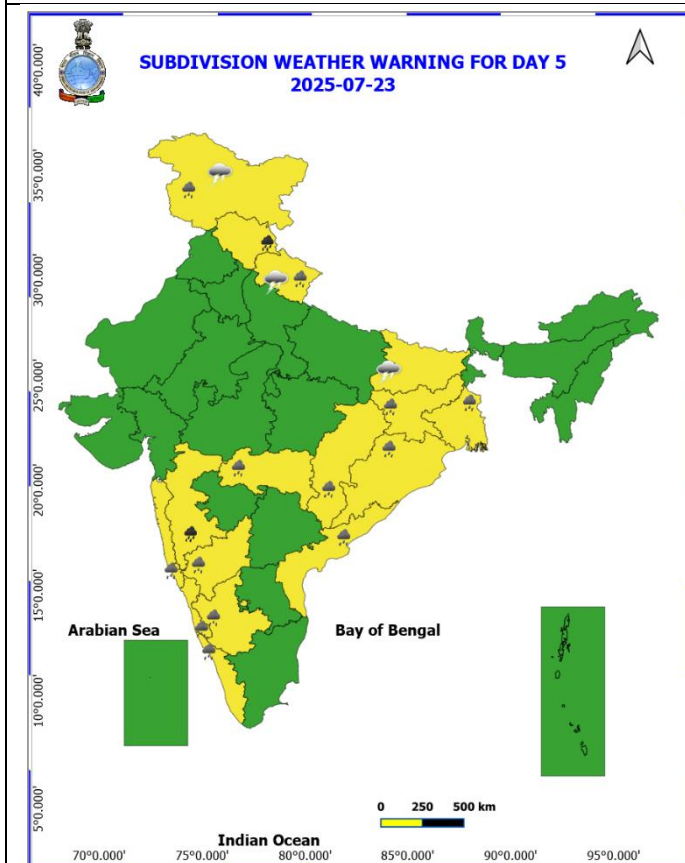
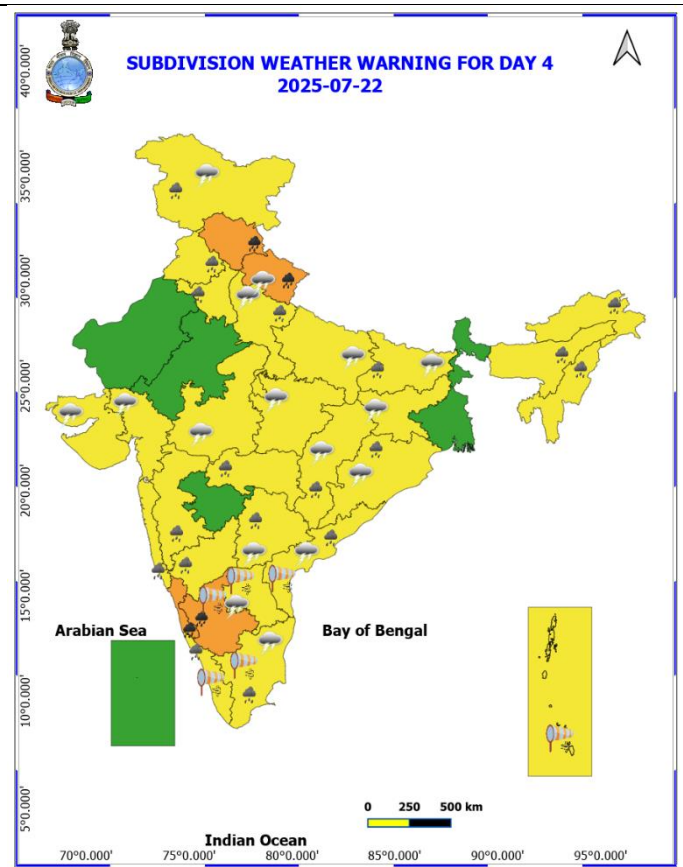
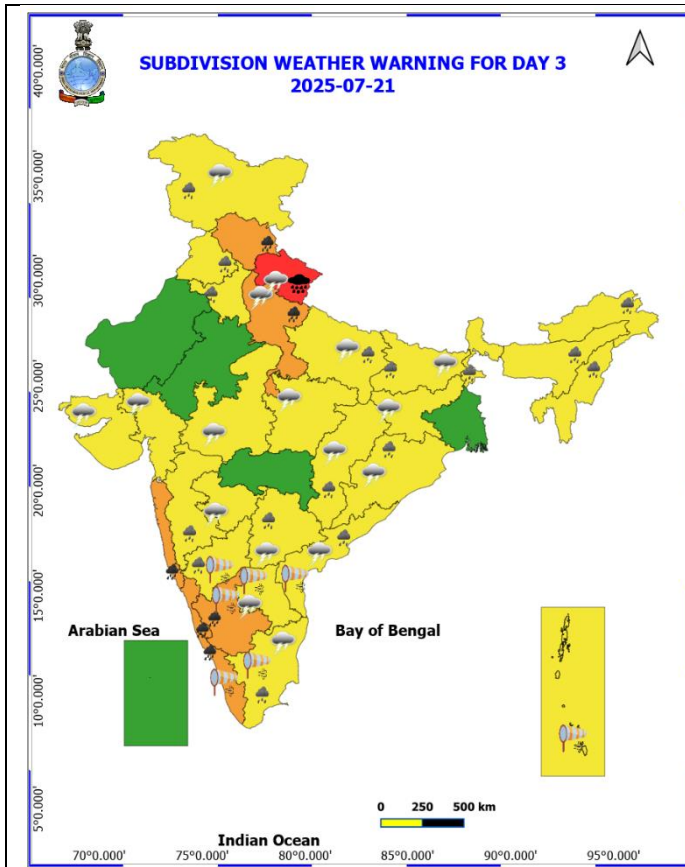


DATE/TIME IN UTC  
IST=UTC + 0530  
L: LOW PRESSURE AREA  
WML: WELL MARKED LOW PRESSURE AREA  
D: DEPRESSION (17-27 KT)  
DD: DEEP DEPRESSION (28-33 KT)  
CS: CYCLONIC STORM (34-47 KT)  
SCS: SEVERE CYCLONIC STORM (48-63KT)  
VSCS: VERY SEVERE CYCLONIC STORM (64-89 KT)  
ESCS: EXTREMELY SEVERE CYCLONIC STORM (90-119 KT)  
SuCS: SUPER CYCLONIC STORM (≥ 120 KT)

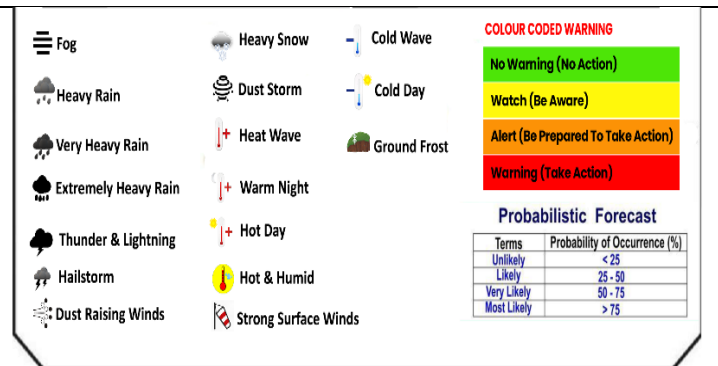
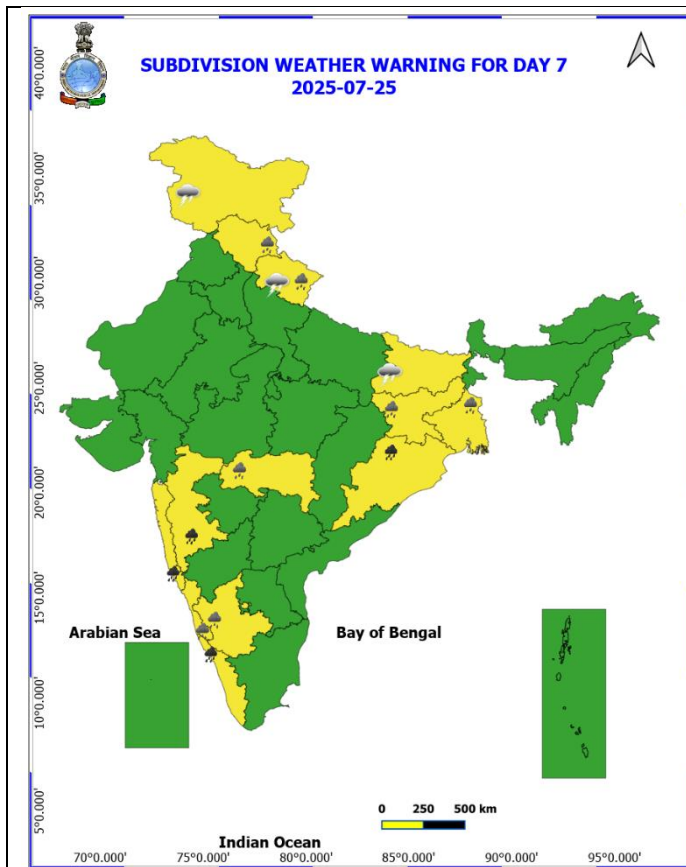
● LESS THAN 34 KT  
● 34-47 KT  
● ≥ 48 KT  
— OBSERVED TRACK  
— FORECAST TRACK  
▲ CONE OF UNCERTAINTY

## Weather Warning Graphics









\* Red colour warning does not mean "Red Alert", Red colour warning means "Take Action".  
Forecast and Warning for any day is valid from 0830 hours IST of day till 0830 hours IST of next day.  
For more details, kindly visit <https://mausam.ind.gov.in> or contact: 911-2434-4599  
(Service to the Nation since 1875)

## Flash Flood Guidance

### 24 hours Outlook for the Flash Flood Risk (FFR) till 1730 IST of 19-07-2025 :

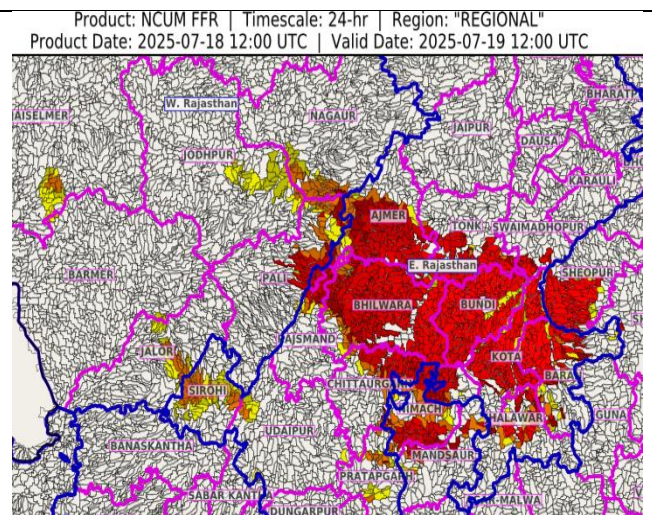
Low to Moderate flash flood risk likely over few watersheds & neighbourhoods of following Met Sub-divisions during next 24 hours.

**East Rajasthan** - Ajmer, Baran, Bhilwara, Bundi, Chittaurgarh, Jhalawar, Kota, Pratapgarh, Rajsmand, Sirohi, Swaimadhampur, Tonk and Udaipur districts.







**West Rajasthan** - Jaiselmer, Jalor, Jodhpur, Nagaur and Pali districts.

Adjoining West Madhya Pradesh - Mandsaur, Nimach and Sheopur districts.

Surface runoff/ Inundation may occur at some fully saturated soils & low-lying areas over Area of Concern



(AoC) as shown in map due to expected rainfall occurrence in next 24 hours.

Flash Flood Threat	Flash Flood Risk
 High Threat (Take Action)	 High Risk (Take Action)
 Moderate threat (Be Prepared)	 Moderate Risk (Be Prepared)
 Low Threat (Be Updated)	 Low Risk (Be Updated)



## **Annexure -I**

**Significant rainfall recorded (in cm) from 0830 hours IST to 1730 hours IST of today, the 18<sup>th</sup> July, 2025:**

**East Rajasthan:** Pratapgarh 15, Sirmathura (dist Dholpur) 14, Kota AP (dist Kota) 3, Ajmer (dist Ajmer), Udaipur (dabok) AP (dist Udaipur), Chittorgarh (dist Chittorgarh) 2 Each;

**West Rajasthan:** Balesar (dist Jodhpur) 10, Desuri (dist Pali) 10, Jodhpur, Phalodi-obs (dist Jodhpur) 3 Each;

**West Madhya Pradesh:** Shivpuri (dist Shivpuri) 4, Guna (dist Guna), Gwalior (dist Gwalior),

**East Madhya Pradesh:** Nowgong-obs (dist Chhatarpur) 3;

**West Uttar Pradesh:** Jhansi (dist Jhansi) 2.